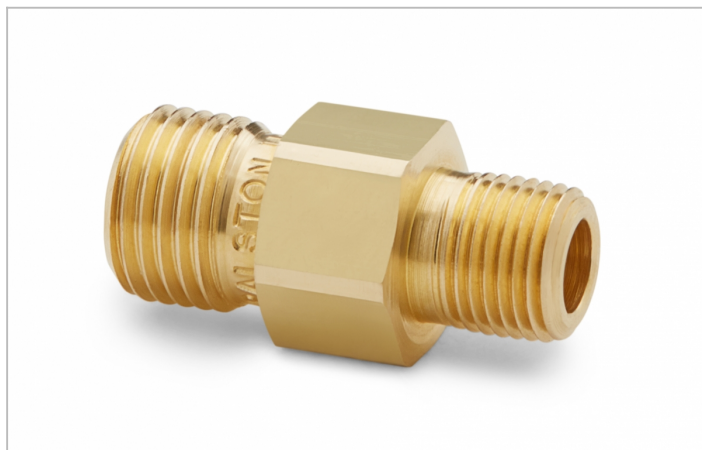


Part No.

# QTHA-1MB1

*1/8" male NPT x male Quick-test, with check-valve, brass*

Connects Female NPT to Quick-test hoses with brass or stainless steel hose ends.



QTHA-1MB1

## Specs/Attributes

Country of origin	USA
Has Check Valve	Yes
Materials	Brass
Max Operating Temperature	225 °F / 105 °C
Max Pressure	3000 PSI / 200 bar / 20 MPa
Max Vacuum	0.00 InHg / 0.0 kPa
Seal Materials	Buna-N
Wrench Size	9/16 In 15 mm
Connector End 1	1/8" Male NPT (ASME B1.20.1)
Connector End 2	Male Quick-test
Weight	0.93 oz / 26 grams
Dimensions	H: 1.2 in (3.05 cm) x W: 0.56 in (1.42 cm) x D: 0.56 in (1.42 cm)