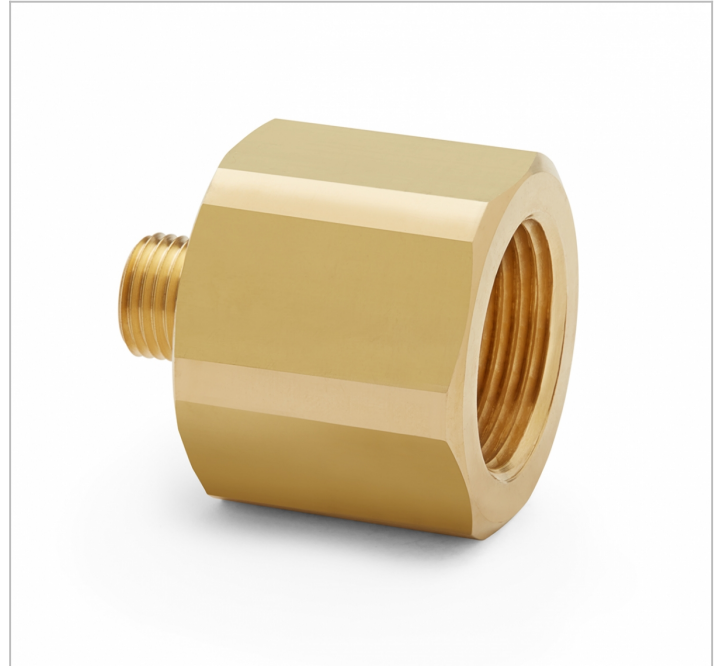


Part No.

# QTHA-6FB0

*3/4" female NPT X male Quick-test, no check-valve, brass*

Connect a Quick-test hose to a pressure gauge or any device with a male NPT connection using thread sealant and a wrench



QTHA-6FB0

## Specs/Attributes

Country of origin	USA
Has Check Valve	No
Materials	Brass
Max Operating Temperature	225 °F / 105 °C
Max Pressure	5000 PSI / 350 bar / 35 MPa
Max Vacuum	0.00 InHg / 0.0 kPa
Seal Materials	Buna-N
Wrench Size	1-3/8 In 35 mm
Connector End 1	3/4" Female NPT (ASME B1.20.1)
Connector End 2	Male Quick-test
Weight	6.24 oz / 175 grams
Dimensions	H: 1.59 in (4.04 cm) x W: 1.37 in (3.48 cm) x D: 1.37 in (3.48 cm)