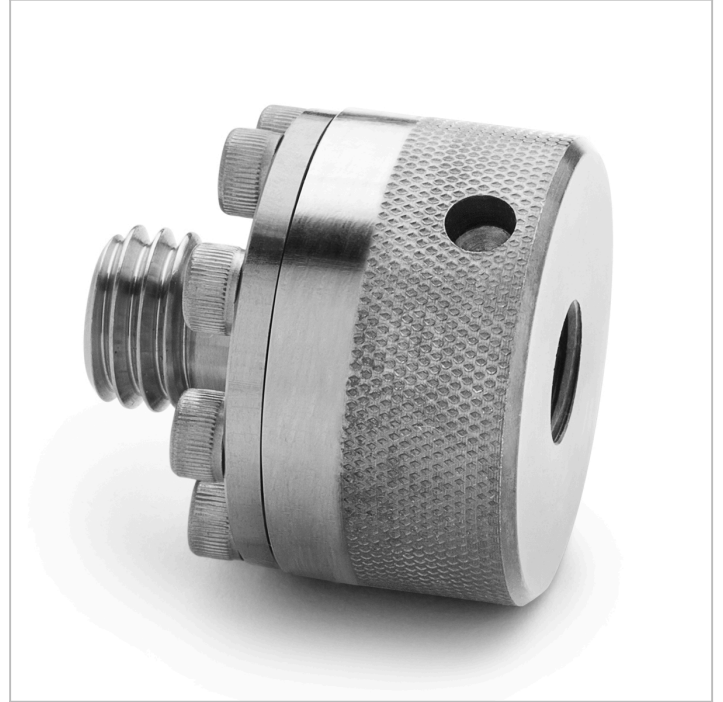


Part No.

XTHA-2FSF-QD

Female 37 degree flare (AN/JIC) x male Quick-test, no check-valve, S.S.

Connect a male 37° flare AN/JIC fitting to a Quick-test hose without a wrench



XTHA-2FSF-QD

Specs/Attributes

Country of origin	USA
Dimensions A	0.00 In / 0.00 mm
Dimensions B	0.00 In / 0.00 mm
Has Check Valve	No
Materials	Stainless Steel
Max Operating Temperature	140 °F / 60 °C
Max Pressure	15000 PSI / 1000 bar / 100 MPa
Min Operating Temperature	0 °F / -18 °C
Seal Materials	Teflon, Viton
Connector End 1	AN -4 (7/16"-20 thread) Female 37 degree (AN/JIC) Flare
Connector End 2	Male Quick-test XT
Weight	6.13 oz / 175 grams
Dimensions	H: 1.74 in (4.42 cm) x W: 1.4 in (3.56 cm) x D: 1.4 in (3.56 cm)